



2022-2023
COVID-19
Programs
Overview

www.swrsd.org
907-842-5287

Table of Contents

Standard Operations Plan.....	2
School Schedule.....	2
Meeting the Needs of Students with Exceptional Needs	2
Health and Safety Protocols.....	3
- <i>Masking</i>	
- <i>Social Distancing</i>	
- <i>Personal Hygiene</i>	
- <i>General</i>	
Transportation.....	4
Facilities Use & Disinfecting/Cleaning.....	4
Student Activities and District Travel.....	5
Food Service.....	5
Symptom Free Facilities.....	6
- <i>Definitions</i>	
- <i>Healthy Schools</i>	
Vaccinations.....	6
Symptomatic Response Protocol.....	7
Positive Case Response Matrix.....	7
Response Protocol.....	8

Using this manual:

Determining and Moving Between Levels

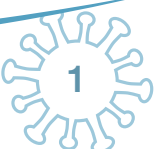
The district health advisory team will inform decisions about moving to the Positive Case Response Protocol. The goal of the protocols will be to maintain the most normal and consistent in-person school environment possible with consideration to safety.

Published August 23, 2022

Southwest Region Schools

www.swrsd.org

907-842-5287



Standard Operations Plan

This school year we will be operating under a Standard Operations Plan. Our focus will be on maintaining as normal a school year as possible, resorting to enhanced measures only when necessary and in as limited a fashion as is consistent with the health and safety of our students, staff, and communities. As we did this past school year, we will continue to work with our local CSCs, tribes and cities to chart the path ahead.

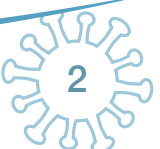
If cases arise in our communities, we will address the situation one community at time, assessing risk and responding in a measured fashion.

School Schedule

- All students will attend a full day of on-site instruction.
- School will operate at 100% capacity.
- School will begin at 9:00am across the district without staggered start times.

Meeting the Needs of Students with Exceptional Needs

- Students will attend and receive all planned services.
- All planned services, evaluations, and assessments will be on-site with precautionary measures to include: symptom checks, masks, and disinfectant of areas and supplies
- Itinerant-related providers will deliver in-person and online services

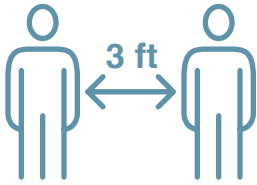


Health and Safety Protocol



Masks

- Standard Operations
 - › Students and staff may be required to wear masks within the building based on CDC determined risk levels. Masks will be optional at low and medium risk but may be required at high risk.
 - › Staff and students in the Test to Stay protocol are required to wear masks regardless of the CDC risk level. See the Response Protocol section for more information.
 - › Current Federal requirements regarding mask use on buses will be followed (see Transportation below).
-



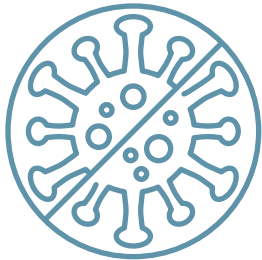
Social Distancing

- Schools may implement social distancing in all areas in the school building based on the most recent CDC or Alaska DHSS guidance.
-



Personal Hygiene

- Staff will teach and reinforce thorough hand washing with soap and water for at least 20 seconds and/or the safe use of hand sanitizer that contains at least 60% alcohol by staff and older students.
 - Hand washing is required during key times including but not limited to: arrival and dismissal; before, during, and after preparing or eating food; after using the bathroom; after blowing one's nose, coughing, or sneezing; after touching objects with bare hands that have been handled by other people.
-



General

- Drinking fountains will be operational. The district recommends that students bring their own water bottle to school.
- Signage will be posted in classrooms, hallways, and entrances to communicate how to stop the spread, COVID-19 symptoms, preventative measures, good hygiene, and school/district specific protocols.



Transportation

Students may need to wear masks on buses based on Federal requirements.

- Masks will be optional for all occupants on the bus.
 - School sites may assist with sanitizing the bus or school vehicle between trips.
 - Riders will be encouraged to social distance to the extent possible on all routes.
 - Family members are encouraged to sit together whenever possible.
 - Parents are encouraged to provide transportation to/from school to reduce capacity of the buses.
-

Facilities Use

- School facilities will be re-opened to visitors and activities outside of the school day for activities under Standard Operations.
 - Masks will be optional at low and medium risk but may be required at high risk. Risk levels are based on CDC guidance.
 - Sponsors of non-school sanctioned activities will submit a facility use agreement and a cleaning fee will be required to ensure the building is returned to a clean state prior to the return of staff and students.
-

Disinfecting/Cleaning

- Enhanced sanitation, including more frequent cleaning of high touch surfaces, high traffic areas, and shared equipment and work-spaces.
- Increased purchasing of PPE, hand sanitizer, and other approved cleaning supplies.
- Classrooms stocked with needed cleaning supplies.
- Age-appropriate cleaning tasks for students cleaning their own workspaces.
- Additional training for staff and students on cleaning procedures.



Student Activities and District Travel

Overview

- Student activity related and district related travel is permitted.
- All district teams traveling will follow SWRS Activities Mitigation plans.
- All participating students in ASAA sanctioned activities must complete a COVID-19 Waiver and Release Form.

COVID-19 Testing

- Students and coaches taking part in extracurricular activities may be required to complete weekly COVID-19 testing throughout the season.
- Chaperones may be required to take a COVID-19 test on the same day as students and coaches

Travel

- The team must adhere to all local laws, mandates, and/or ordinances
- When traveling to other schools, coaches will supervise students at all times and provide structured times for activities outside of the school.
- The team will not be allowed to visit local households while on school sponsored trips.

Hosting Events

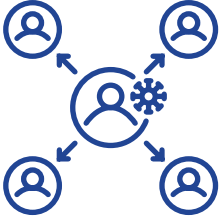
- Visiting teams may be required to test athletes prior to the arrival of the event. This will be verified between the athletic directors of each district.
- Spectators may be allowed to attend if feasible.

Food Service

- Sites will serve breakfast in various ways following state food service guidelines.
- Hand washing before lunch is encouraged.
- Shared utensils, condiments, or other items will not be allowed.
- Food services personnel will place all food items on student trays.
- If a student is not allowed into the school building due to self-quarantine or symptom isolation, breakfast and lunches must continue to be provided for that student.
- Social distancing will be encouraged.

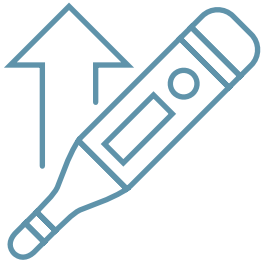


Symptom Free Facilities



Definitions:

- **Close Contact** - Someone who was less than 6 feet away from an infected person for a cumulative total of 15 minutes or more over a 24-hour period (for example, three individual 5-minute exposures for a total of 15 minutes).
- **Isolation** separates people exhibiting symptoms of a contagious disease from people who are not exhibiting symptoms.
- **Self-quarantine** separates and restricts the movements of people who were possibly exposed to a contagious disease to see if they become sick and avoid further spread of the disease.
- **Test To Stay (TTS)** protocol is a method of serial testing and mask wearing that will allow students and staff to attend school rather than quarantine.

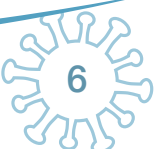


Healthy School:

- For students and staff that are exhibiting COVID-19 symptoms, the Response Protocol will be followed (see Response Protocol section).
- Visitors that are exhibiting symptoms of COVID-19 are strongly discouraged to enter the school building unless it is completely necessary.
- COVID-19 symptoms include fever over 100.3 degrees Fahrenheit or higher, cough, shortness or breath, chills, night sweats, sore throat, body aches, muscle aches, joint pain, loss of taste or smell, headache, confusion, vomiting, diarrhea, abdominal pain.

Vaccination

Vaccines are an important tool to help stop the COVID-19 pandemic. COVID-19 vaccinations are encourage for students and staff that meet the eligibility criteria. Parents and staff can contact the Bristol Bay Area Health Corporation (907-843-5287) or Public Health (907-842-5981) to learn more about COVID-19 vaccines, to get answers to your questions about the vaccine, and to make an appointment for a COVID-19 vaccine.



Symptomatic Response Protocol

Visitor

- If a visitor to the building is suspected of displaying symptoms of COVID-19 during the health screening, they will be politely asked to leave the school building and encouraged to take a COVID-19 test.
-

Positive Case Response Matrix

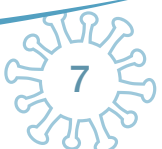
A case or cases in or directly linked to the school

Classroom, building, or district may close for one day

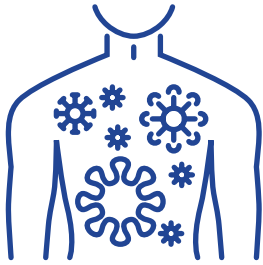
- As Soon As Possible: School facilities will be sanitized, disinfected and cleaned.
- See Response Protocol Chart

Widespread community transmission

- Widespread community transmission may result in a decision to transition to remote learning.
- Students' ages, classroom/school dynamics and other variables will play a role in decision making.
- Testing of all students and staff may be required for a return to in-person learning.



Response Protocol



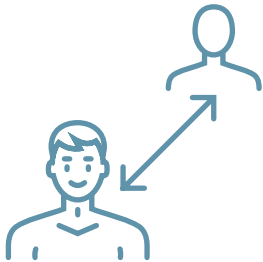
Positive COVID-19 Test:

Staff and/or students that have tested positive for COVID-19 must complete one of the following measures to return to school:

- Isolate for 5 days and be eligible to return to school on day 6 (or later) when you are fever free (without the aid of fever reducing medicine) and symptoms are improving. A mask is required to be worn for days six through ten after the isolation period; OR
- Isolate for 10 days and be eligible to return on day 11 after exposure
- Positive COVID-19 tests will be communicated to the site principal and superintendent, maintaining student privacy at all times.

**Symptomatic Staff & Students - day zero is the day that symptoms began*

**Asymptomatic Staff & Students - day zero is the day of the positive test result*

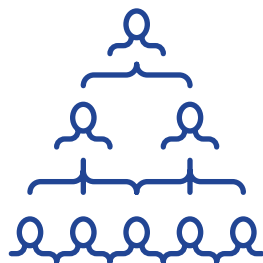


Close Contacts:

Close contacts must complete one of the following measures to return to school:

- Quarantine for 5 days after exposure and be eligible to return to school on day 6 (or later) with a negative test on day 5 (or later) after exposure. A mask is required to be worn for days six through ten after the negative test; OR
- Quarantine for 10 days and be eligible to return on day 11 after exposure; OR
- Enter the Test to Stay Protocol - no quarantine required if the close contact gets tested every day for the first five days of being a close contact AND a mask is required to be worn for days one through ten.

**Exception to quarantine - staff & student who had confirmed COVID-19 within the last 90 days.*

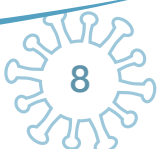


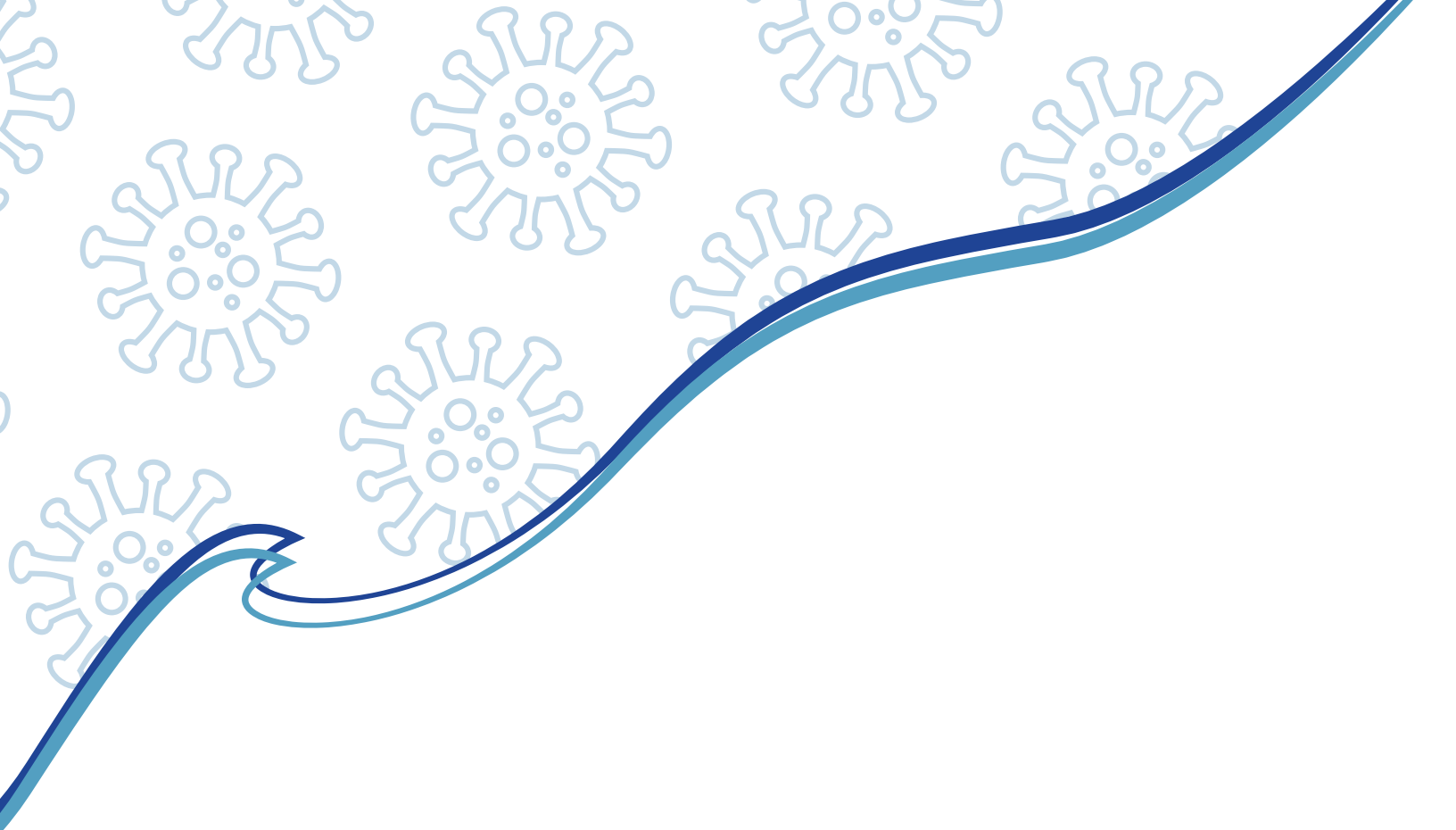
Ongoing Exposure (Household Cases & Close Contacts):

Staff and/or students that reside in a household with a COVID positive household member must complete one of the following measures to return to school:

- Household close contact will quarantine for 5 days following the 5 day isolation period of the positive household member (10 days total) and return to school on day 11 (or later) with a negative test on day 10 (or later). A mask is required to be worn for the five days after quarantine ends (days 11 through 15).
- Quarantine for 15 days and be eligible to return on day 16 after exposure; OR
- Enter the Test to Stay Protocol - no quarantine required if the close contact gets tested every day for ten days AND a mask is required to be worn for those ten days. The ten day testing period covers the isolation period of the positive household member and five days that would be the quarantine period of the close contact.

** The quarantine time for the close contacts due to ongoing exposure restarts if/when a different household member tests positive for COVID.*





Published August 23, 2022

Southwest Region Schools

www.swrsd.org

907-842-5287